

Izzy Billen

1182_Global & Cultural Awareness ()

No. of responses = 690

No. of enrolled = 7000

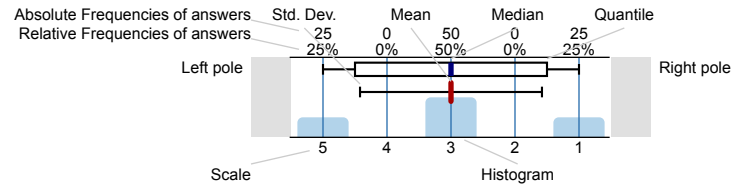
% returned = 9.86



Survey Results

Legend

Question text



n=No. of responses
av.=Mean
md=Median
dev.=Std. Dev.
ab.=Abstention

1. Tell us about you

1.1) Sex



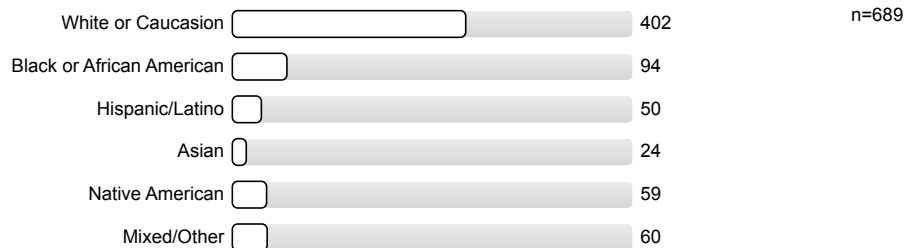
1.2) Marital Status



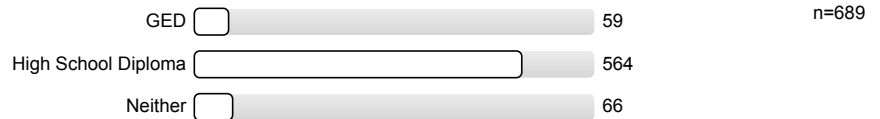
1.3) What is your age group?



1.4) Race/Ethnicity



1.5) Which do you have?



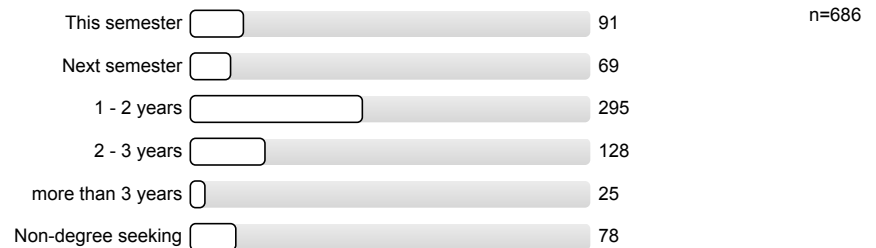
1.6) How many colleges other than Rose State have you attend?



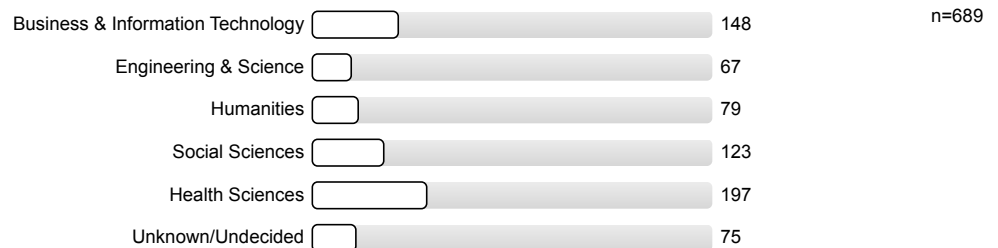
1.7) Total college credit hours completed



1.8) When do you expect to graduate from Rose State College?

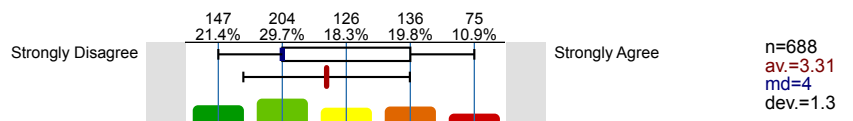


1.9) Which Academic Division is associated with your major?

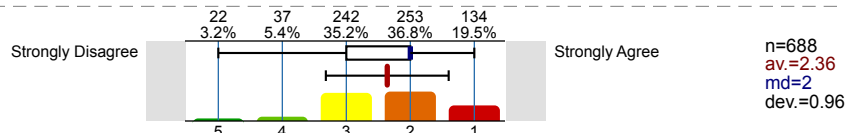


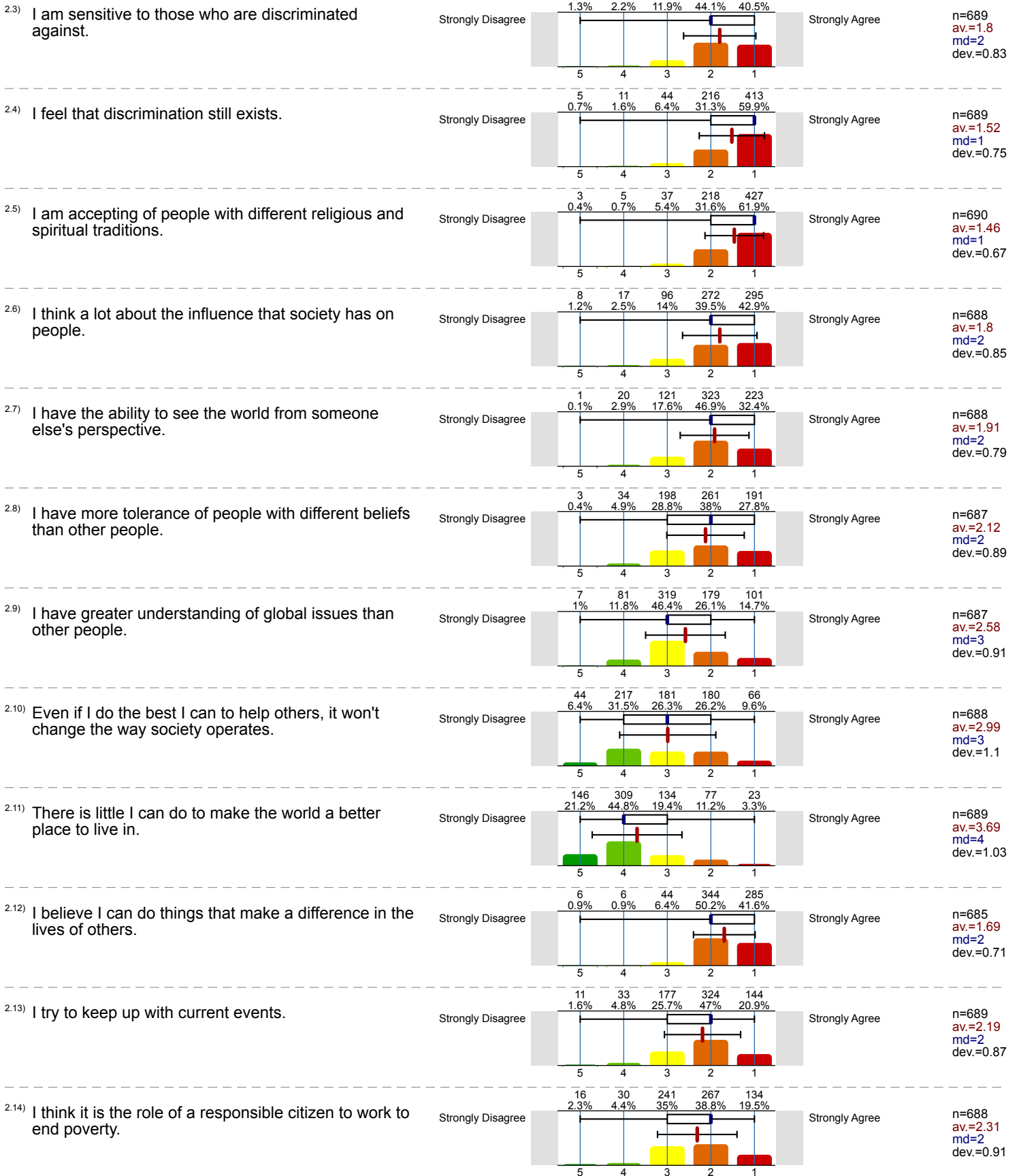
2. What are your views?

2.1) I believe some people have a culture and others do not.



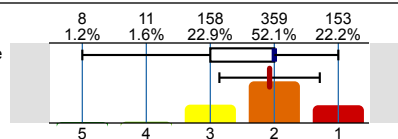
2.2) I see myself as a global citizen.





2.15) I feel it is important to contribute money or time to a charitable cause.

Strongly Disagree

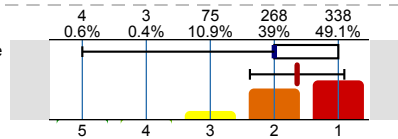


Strongly Agree

n=689
av.=2.07
md=2
dev.=0.78

2.16) I believe it is important to speak up against racial injustice.

Strongly Disagree

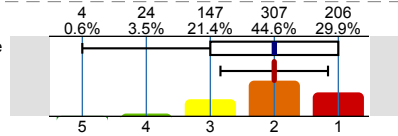


Strongly Agree

n=688
av.=1.64
md=2
dev.=0.74

2.17) I am knowledgeable about my own culture.

Strongly Disagree

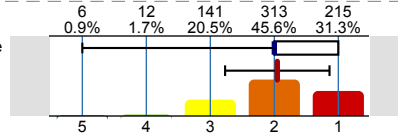


Strongly Agree

n=688
av.=2
md=2
dev.=0.84

2.18) I feel that my college community honors diversity.

Strongly Disagree

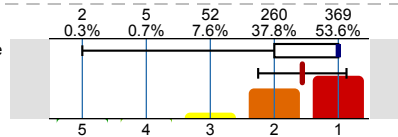


Strongly Agree

n=687
av.=1.95
md=2
dev.=0.82

2.19) I feel comfortable being around people from backgrounds different from my own.

Strongly Disagree



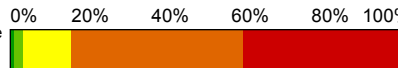
Strongly Agree

n=688
av.=1.56
md=1
dev.=0.69

3. How do you respond?

3.1) I frequently interact with people from a race/ethnic group different from my own.

Strongly Disagree

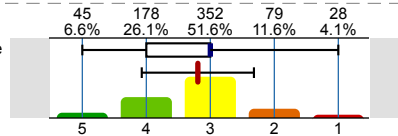


Strongly Agree

n=684
av.=1.78
md=2
dev.=0.82

3.2) When I notice cultural differences, my culture tends to have the better approach.

Strongly Disagree

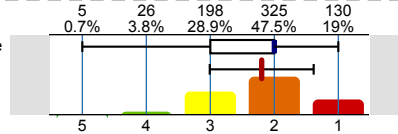


Strongly Agree

n=682
av.=3.2
md=3
dev.=0.88

3.3) I consider different cultural perspectives when evaluating global problems.

Strongly Disagree

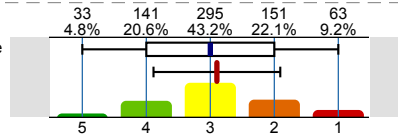


Strongly Agree

n=684
av.=2.2
md=2
dev.=0.81

3.4) I have taken action to raise awareness of a local issue.

Strongly Disagree

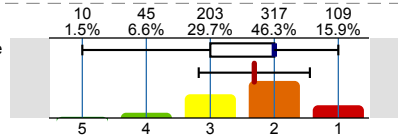


Strongly Agree

n=683
av.=2.9
md=3
dev.=0.99

3.5) I can discuss cultural differences from an informed perspective.

Strongly Disagree

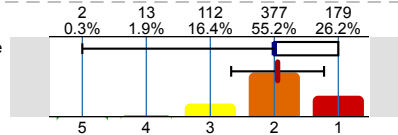


Strongly Agree

n=684
av.=2.31
md=2
dev.=0.87

3.6) I take into account different perspectives before drawing conclusions about the world around me.

Strongly Disagree

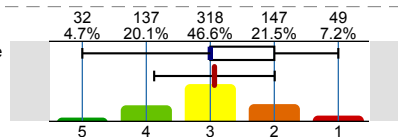


Strongly Agree

n=683
av.=1.95
md=2
dev.=0.73

3.7) I have taken action to raise awareness of a global issue.

Strongly Disagree

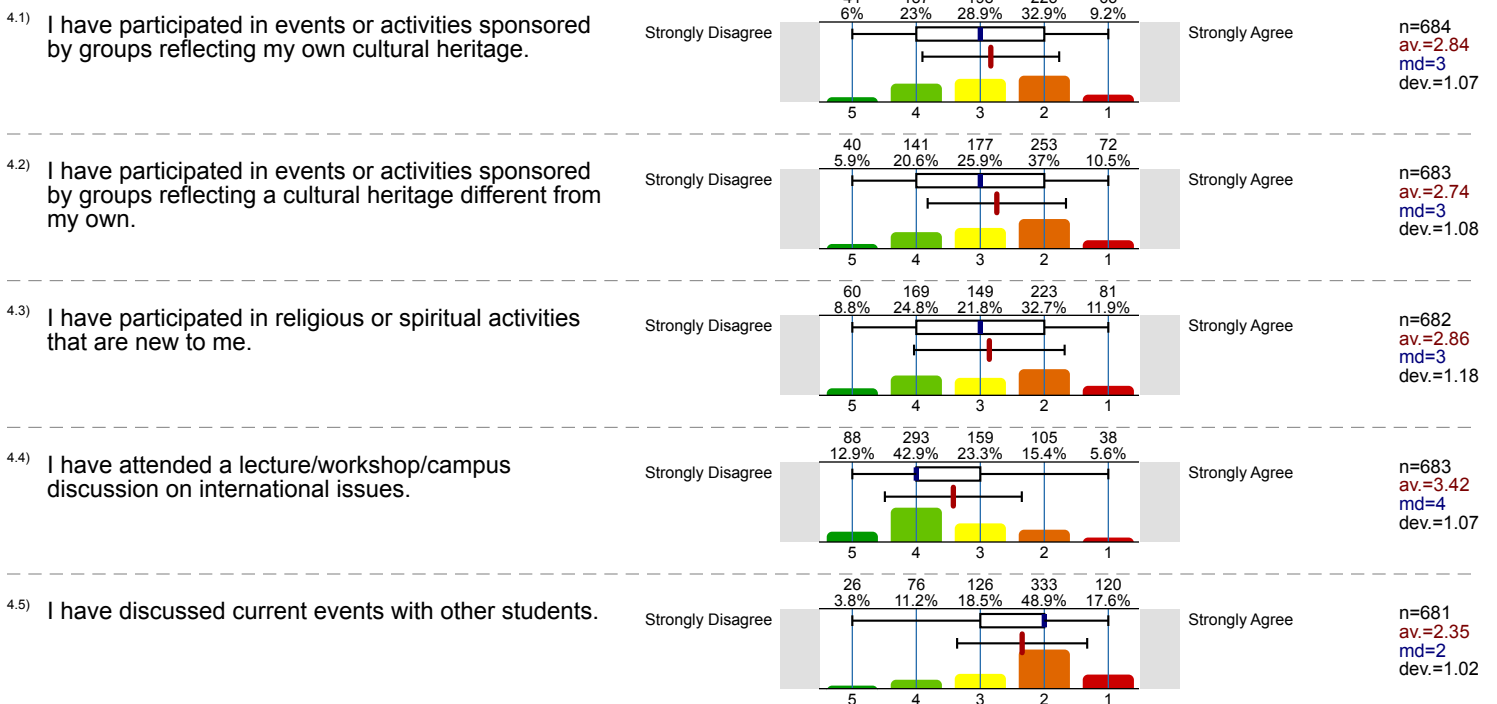


Strongly Agree

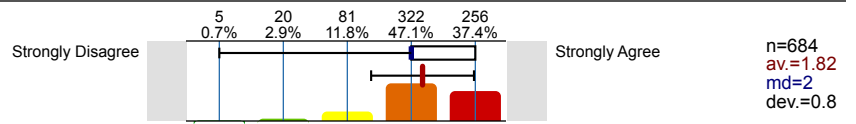
n=683
av.=2.94
md=3
dev.=0.94



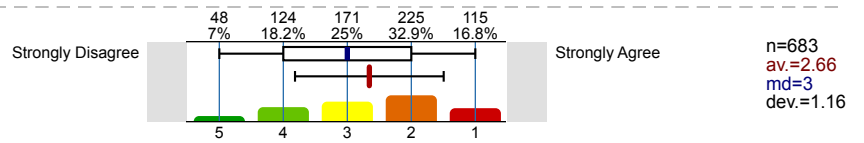
4. Share about your experiences since coming to Rose State College



4.6) I have worked cooperatively with people from backgrounds other than my own.



4.7) I have taken classes that help me understand other cultures.

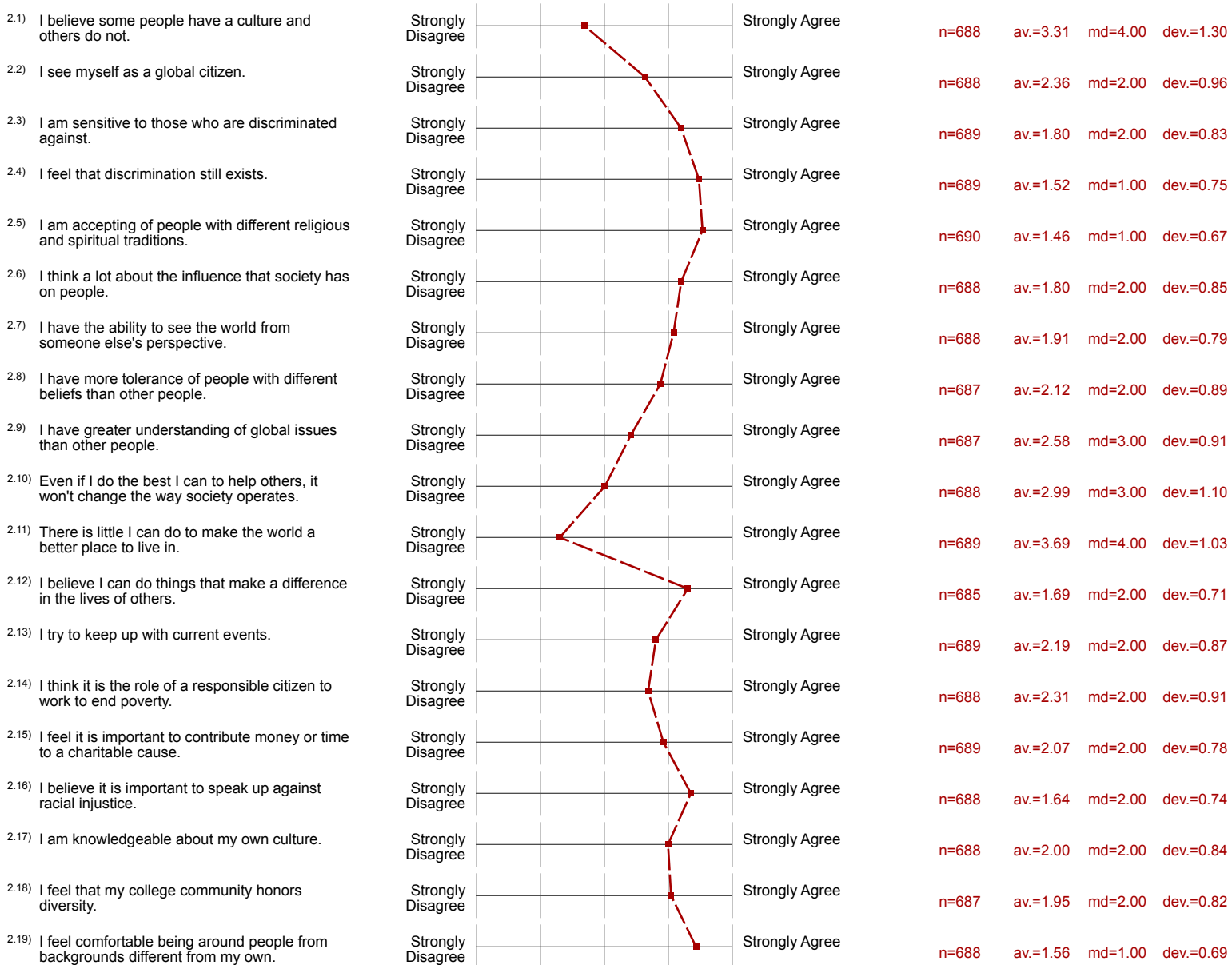


Profile

Subunit: Institutional Effectiveness
 Name of the instructor: Izzy Billen
 Name of the course: 1182_Global & Cultural Awareness
 (Name of the survey)










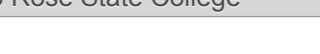
Values used in the profile line: Mean

2. What are your views?



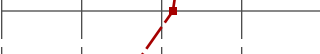






3. How do you respond?

3.1) I frequently interact with people from a race/ethnic group different from my own.	Strongly Disagree					Strongly Agree	n=684	av.=1.78	md=2.00	dev.=0.82
--	-------------------	--	--	--	--	----------------	-------	----------	---------	-----------

3.2) When I notice cultural differences, my culture tends to have the better approach.	Strongly Disagree		Strongly Agree	n=682	av.=3.20	md=3.00	dev.=0.88
3.3) I consider different cultural perspectives when evaluating global problems.	Strongly Disagree		Strongly Agree	n=684	av.=2.20	md=2.00	dev.=0.81
3.4) I have taken action to raise awareness of a local issue.	Strongly Disagree		Strongly Agree	n=683	av.=2.90	md=3.00	dev.=0.99
3.5) I can discuss cultural differences from an informed perspective.	Strongly Disagree		Strongly Agree	n=684	av.=2.31	md=2.00	dev.=0.87
3.6) I take into account different perspectives before drawing conclusions about the world around me.	Strongly Disagree		Strongly Agree	n=683	av.=1.95	md=2.00	dev.=0.73
3.7) I have taken action to raise awareness of a global issue.	Strongly Disagree		Strongly Agree	n=683	av.=2.94	md=3.00	dev.=0.94
3.8) I frequently interact with people from a country different than my own.	Strongly Disagree		Strongly Agree	n=682	av.=2.50	md=2.00	dev.=1.15
3.9) I rarely question what I have been taught about the world around me.	Strongly Disagree		Strongly Agree	n=682	av.=3.63	md=4.00	dev.=1.09
3.10) I intentionally involve people from many cultural backgrounds in my life.	Strongly Disagree		Strongly Agree	n=682	av.=2.59	md=3.00	dev.=0.98
3.11) I don't spend much time thinking about race relations in this country.	Strongly Disagree		Strongly Agree	n=683	av.=3.25	md=3.00	dev.=1.09
3.12) Most of my friends are from my own ethnic background.	Strongly Disagree		Strongly Agree	n=684	av.=2.95	md=3.00	dev.=1.07
3.13) I am informed of current issues that impact international relations.	Strongly Disagree		Strongly Agree	n=683	av.=2.48	md=2.00	dev.=0.90
3.14) I understand the reasons and causes of conflict among nations of different cultures.	Strongly Disagree		Strongly Agree	n=684	av.=2.43	md=2.00	dev.=0.90

4. Share about your experiences since coming to Rose State College

4.1) I have participated in events or activities sponsored by groups reflecting my own cultural heritage.	Strongly Disagree		Strongly Agree	n=684	av.=2.84	md=3.00	dev.=1.07
4.2) I have participated in events or activities sponsored by groups reflecting a cultural heritage different from my own.	Strongly Disagree		Strongly Agree	n=683	av.=2.74	md=3.00	dev.=1.08
4.3) I have participated in religious or spiritual activities that are new to me.	Strongly Disagree		Strongly Agree	n=682	av.=2.86	md=3.00	dev.=1.18
4.4) I have attended a lecture/workshop/campus discussion on international issues.	Strongly Disagree		Strongly Agree	n=683	av.=3.42	md=4.00	dev.=1.07
4.5) I have discussed current events with other students.	Strongly Disagree		Strongly Agree	n=681	av.=2.35	md=2.00	dev.=1.02
4.6) I have worked cooperatively with people from backgrounds other than my own.	Strongly Disagree		Strongly Agree	n=684	av.=1.82	md=2.00	dev.=0.80
4.7) I have taken classes that help me understand other cultures.	Strongly Disagree		Strongly Agree	n=683	av.=2.66	md=3.00	dev.=1.16

Billen, Isabelle

From: Billen, Isabelle
Sent: Thursday, April 12, 2018 2:07 PM
Subject: Stats of the Week -- Global and Cultural Awareness Spring 2018 #1
Attachments: 1182_Global_&_Cultural_Awareness_results.pdf

Each year we are expected to assess the effectiveness of our courses and programs. This spring the General Education objective measured was Global and Cultural Awareness. In February, the Assessment Committee utilized the Scantron Class Climate survey tool to send an electronic survey to all students, 690 responses were received. The survey contained the same questions as was used in Spring 2015. The full results are attached and will be posted on the internal web.

In the meantime, I will begin taking a deeper look into the results and sending them out via the Stats of the Week emails. *I'll try to be as entertaining as Jeff but no guarantees.*

The Assessment Committee developed the following definition for Global and Cultural Awareness:

Global and cultural awareness stems from a critical analysis of and an engagement with complex, interdependent global and cultural systems and legacies (such as natural, physical, social, economic, and political) and their implications on people's lives.

Through global and cultural awareness activities, students should:

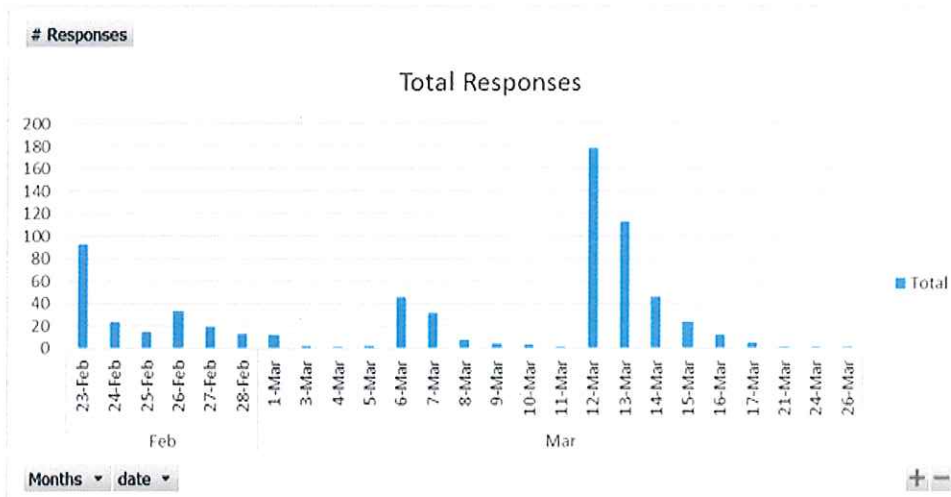
- *Become informed, open-minded, and responsible people who are attentive to diversity across the spectrum of differences*
- *Seek to understand how their actions affect both local and global communities*
- *Address the world's most pressing and enduring issues collaboratively and equitably*
- *Work cooperatively with people from populations different than their own*

The first thing to look at is, who took the survey and by what method.

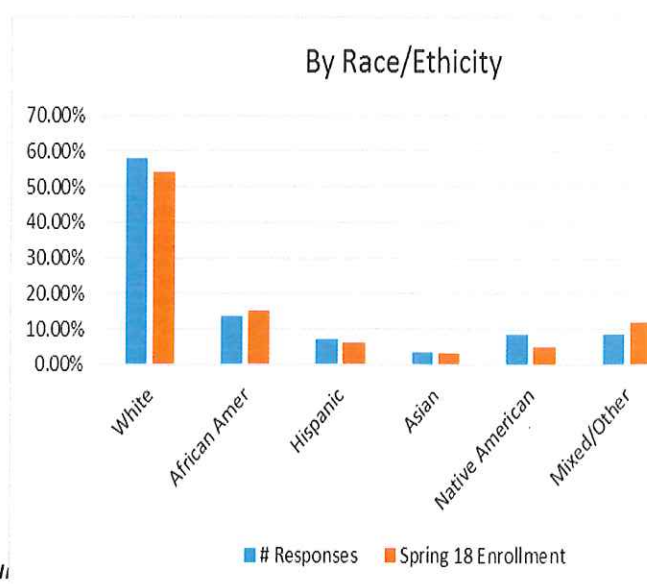
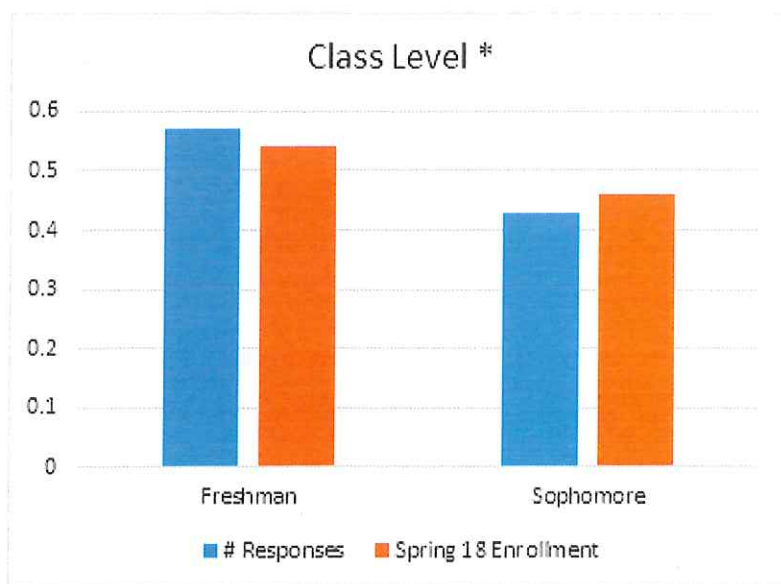
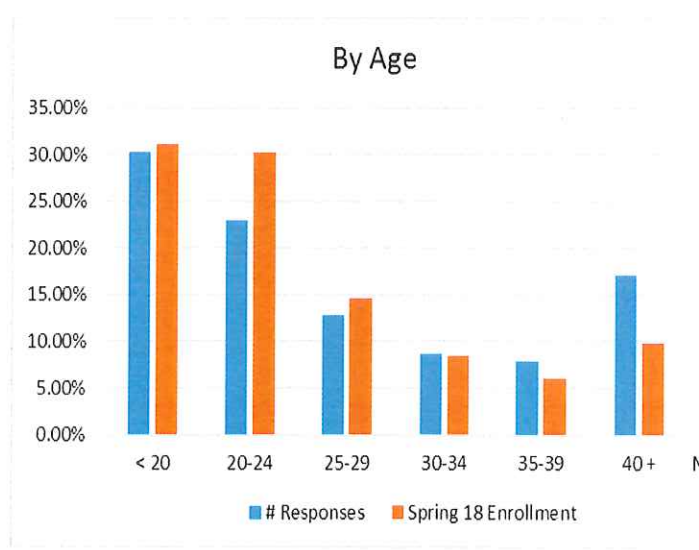
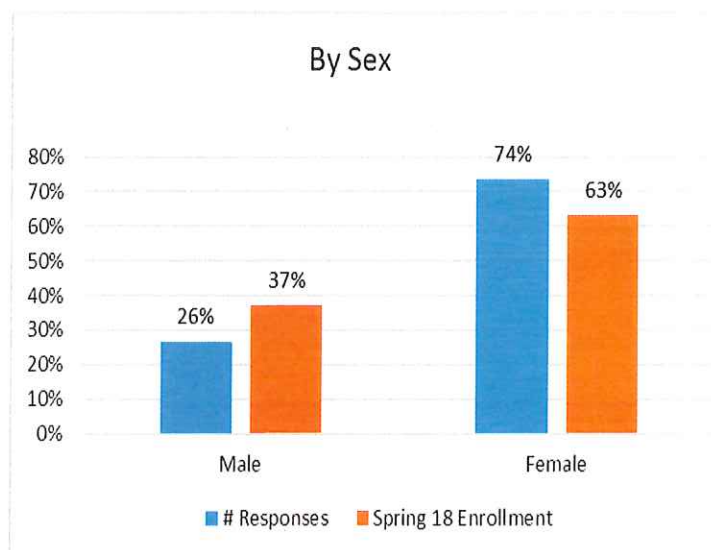
An email was sent out to all students the last week of February, and a Global News Item was added to D2L in March.

Global and Cultural Awareness 2018	
Method of response	# Responses
M-Mobile	198
O-Online	492
Grand Total	690

As you can see from the chart below, we received the most input once the D2L Global News Item was posted. Does this indicate that students don't respond well to email???



The demographics of those who responded were representative of our total student body enrolled in the Spring.



More data to come in future additions of 'Stats of the Week'. Please feel free to send me comments or questions.

Izzy Billen

1182_Global & Cultural Awareness ()

No. of responses = 690

No. of enrolled = 7000

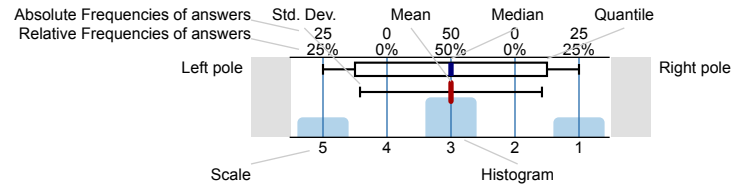
% returned = 9.86



Survey Results

Legend

Question text



n=No. of responses
av.=Mean
md=Median
dev.=Std. Dev.
ab.=Abstention

1. Tell us about you

1.1) Sex



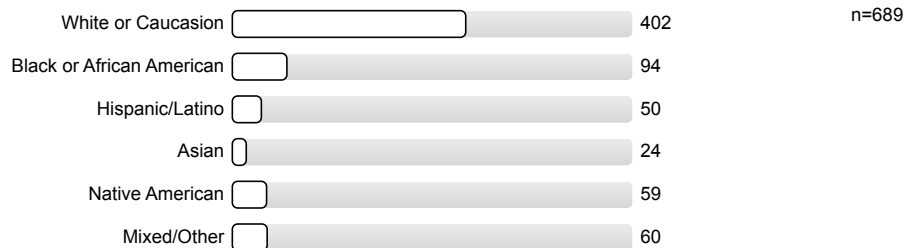
1.2) Marital Status



1.3) What is your age group?



1.4) Race/Ethnicity



1.5) Which do you have?



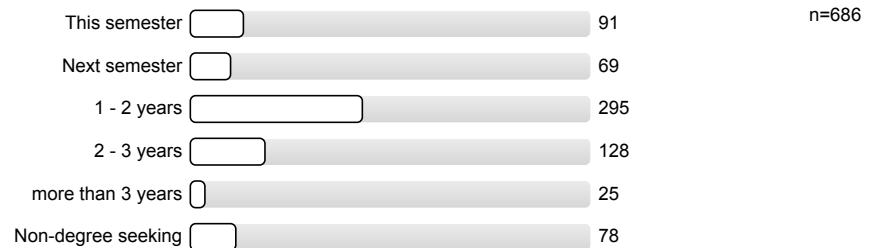
1.6) How many colleges other than Rose State have you attend?



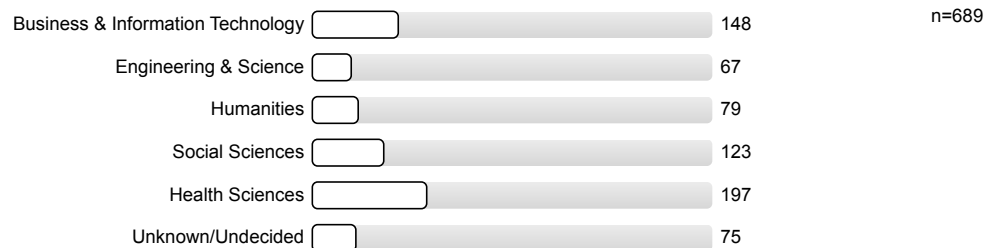
1.7) Total college credit hours completed



1.8) When do you expect to graduate from Rose State College?

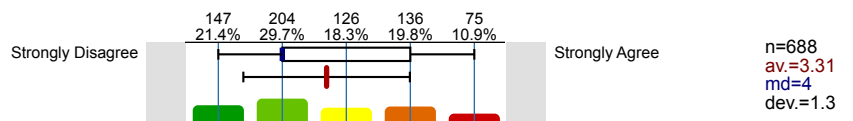


1.9) Which Academic Division is associated with your major?

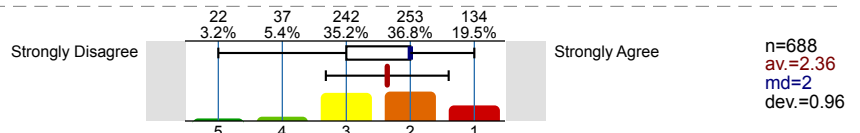


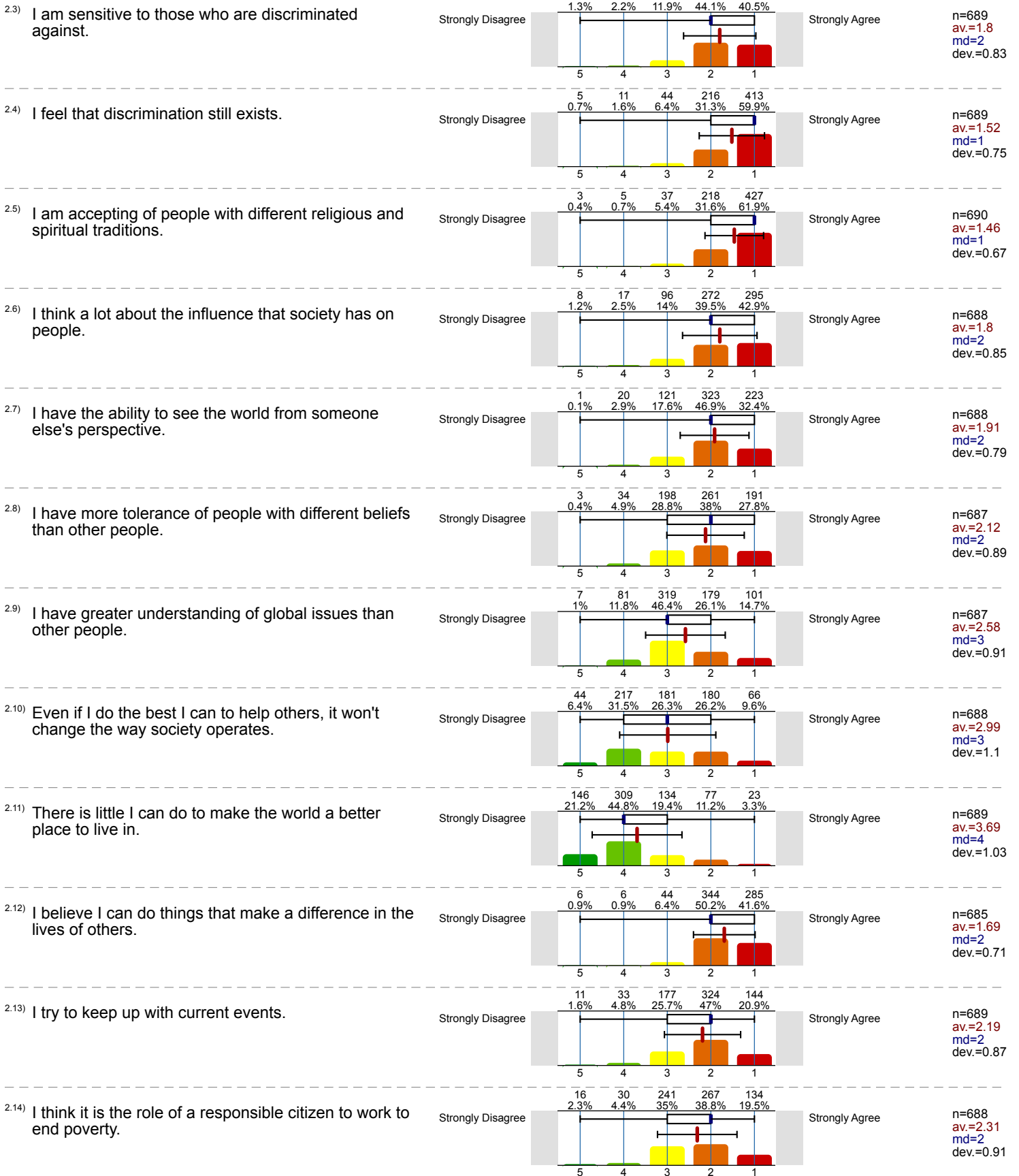
2. What are your views?

2.1) I believe some people have a culture and others do not.



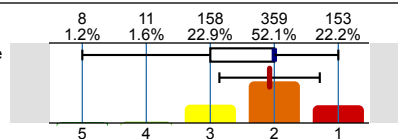
2.2) I see myself as a global citizen.





2.15) I feel it is important to contribute money or time to a charitable cause.

Strongly Disagree

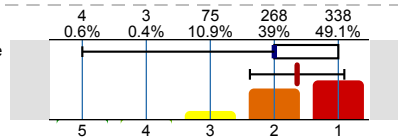


Strongly Agree

n=689
av.=2.07
md=2
dev.=0.78

2.16) I believe it is important to speak up against racial injustice.

Strongly Disagree

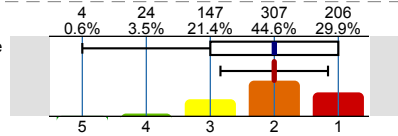


Strongly Agree

n=688
av.=1.64
md=2
dev.=0.74

2.17) I am knowledgeable about my own culture.

Strongly Disagree

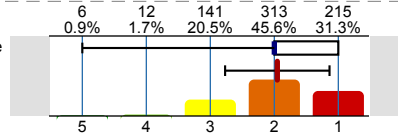


Strongly Agree

n=688
av.=2
md=2
dev.=0.84

2.18) I feel that my college community honors diversity.

Strongly Disagree

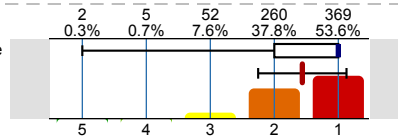


Strongly Agree

n=687
av.=1.95
md=2
dev.=0.82

2.19) I feel comfortable being around people from backgrounds different from my own.

Strongly Disagree



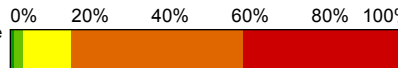
Strongly Agree

n=688
av.=1.56
md=1
dev.=0.69

3. How do you respond?

3.1) I frequently interact with people from a race/ethnic group different from my own.

Strongly Disagree

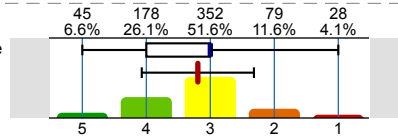


Strongly Agree

n=684
av.=1.78
md=2
dev.=0.82

3.2) When I notice cultural differences, my culture tends to have the better approach.

Strongly Disagree

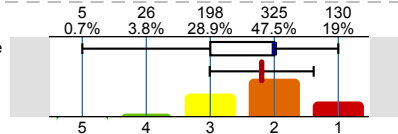


Strongly Agree

n=682
av.=3.2
md=3
dev.=0.88

3.3) I consider different cultural perspectives when evaluating global problems.

Strongly Disagree

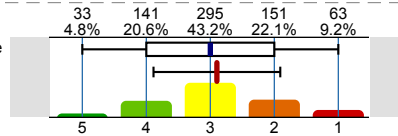


Strongly Agree

n=684
av.=2.2
md=2
dev.=0.81

3.4) I have taken action to raise awareness of a local issue.

Strongly Disagree

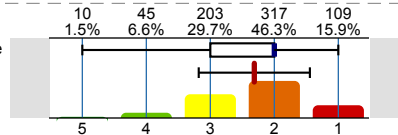


Strongly Agree

n=683
av.=2.9
md=3
dev.=0.99

3.5) I can discuss cultural differences from an informed perspective.

Strongly Disagree

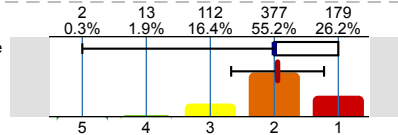


Strongly Agree

n=684
av.=2.31
md=2
dev.=0.87

3.6) I take into account different perspectives before drawing conclusions about the world around me.

Strongly Disagree

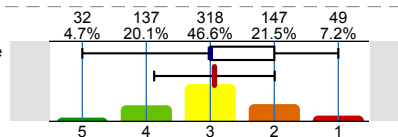


Strongly Agree

n=683
av.=1.95
md=2
dev.=0.73

3.7) I have taken action to raise awareness of a global issue.

Strongly Disagree

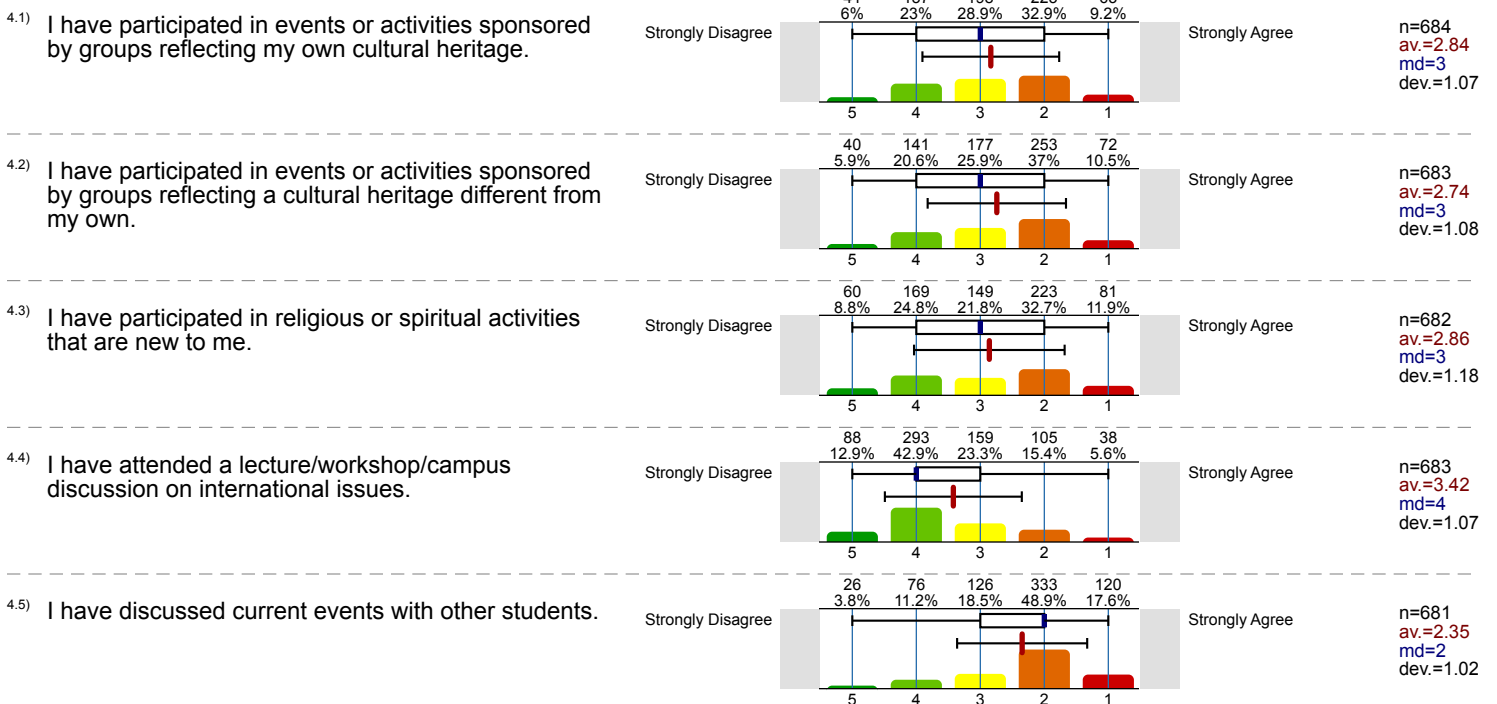


Strongly Agree

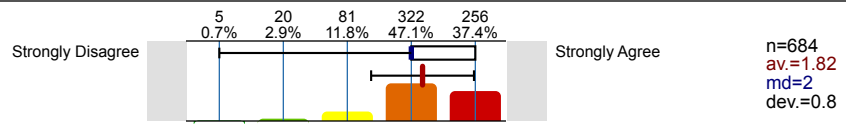
n=683
av.=2.94
md=3
dev.=0.94



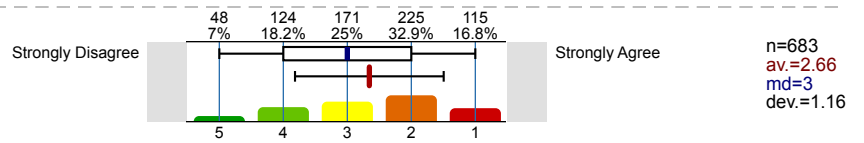
4. Share about your experiences since coming to Rose State College



4.6) I have worked cooperatively with people from backgrounds other than my own.



4.7) I have taken classes that help me understand other cultures.

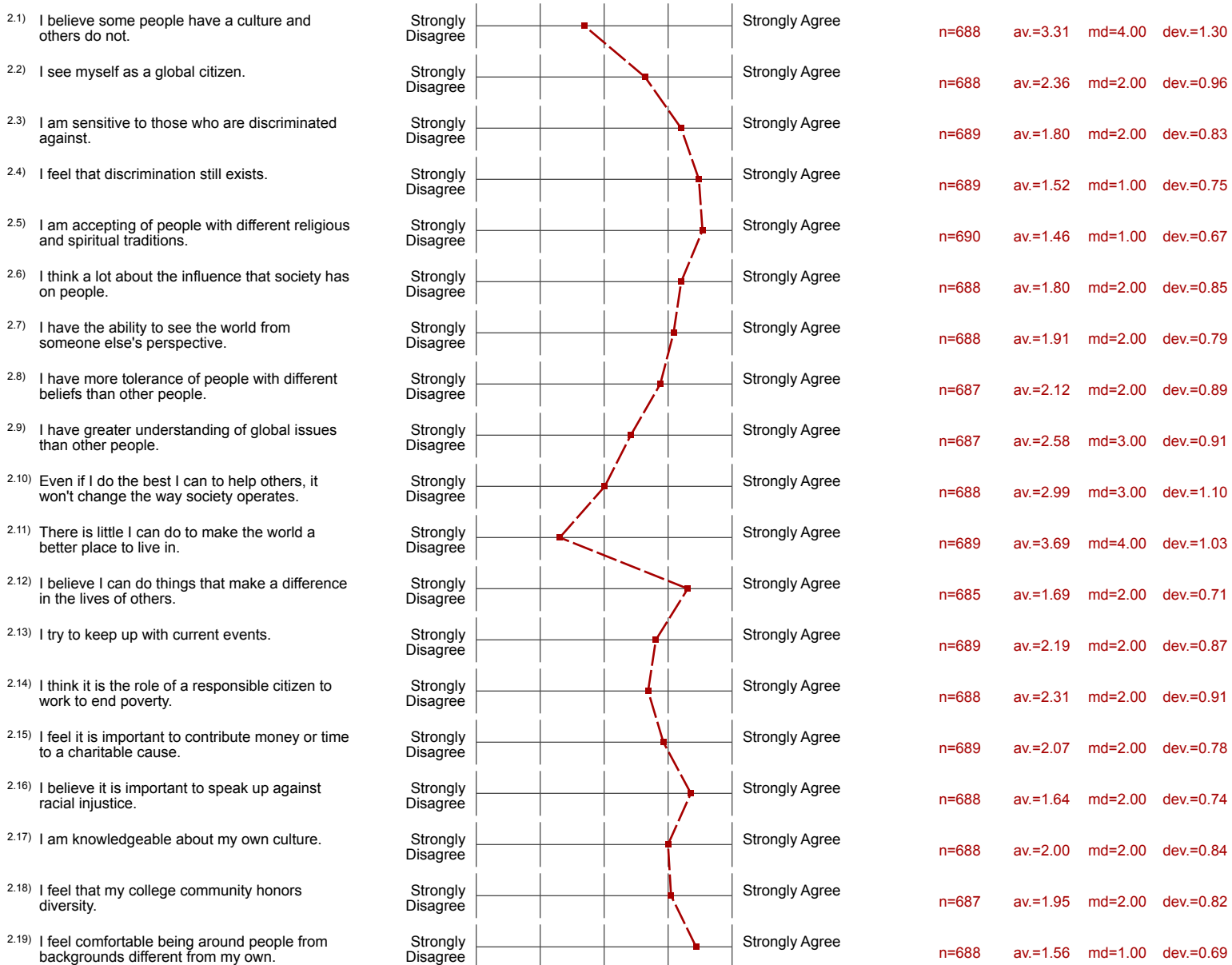


Profile

Subunit: Institutional Effectiveness
 Name of the instructor: Izzy Billen
 Name of the course: 1182_Global & Cultural Awareness
 (Name of the survey)









Values used in the profile line: Mean

2. What are your views?



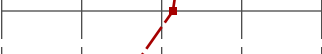






3. How do you respond?



3.2) When I notice cultural differences, my culture tends to have the better approach.	Strongly Disagree		Strongly Agree	n=682	av.=3.20	md=3.00	dev.=0.88
3.3) I consider different cultural perspectives when evaluating global problems.	Strongly Disagree		Strongly Agree	n=684	av.=2.20	md=2.00	dev.=0.81
3.4) I have taken action to raise awareness of a local issue.	Strongly Disagree		Strongly Agree	n=683	av.=2.90	md=3.00	dev.=0.99
3.5) I can discuss cultural differences from an informed perspective.	Strongly Disagree		Strongly Agree	n=684	av.=2.31	md=2.00	dev.=0.87
3.6) I take into account different perspectives before drawing conclusions about the world around me.	Strongly Disagree		Strongly Agree	n=683	av.=1.95	md=2.00	dev.=0.73
3.7) I have taken action to raise awareness of a global issue.	Strongly Disagree		Strongly Agree	n=683	av.=2.94	md=3.00	dev.=0.94
3.8) I frequently interact with people from a country different than my own.	Strongly Disagree		Strongly Agree	n=682	av.=2.50	md=2.00	dev.=1.15
3.9) I rarely question what I have been taught about the world around me.	Strongly Disagree		Strongly Agree	n=682	av.=3.63	md=4.00	dev.=1.09
3.10) I intentionally involve people from many cultural backgrounds in my life.	Strongly Disagree		Strongly Agree	n=682	av.=2.59	md=3.00	dev.=0.98
3.11) I don't spend much time thinking about race relations in this country.	Strongly Disagree		Strongly Agree	n=683	av.=3.25	md=3.00	dev.=1.09
3.12) Most of my friends are from my own ethnic background.	Strongly Disagree		Strongly Agree	n=684	av.=2.95	md=3.00	dev.=1.07
3.13) I am informed of current issues that impact international relations.	Strongly Disagree		Strongly Agree	n=683	av.=2.48	md=2.00	dev.=0.90
3.14) I understand the reasons and causes of conflict among nations of different cultures.	Strongly Disagree		Strongly Agree	n=684	av.=2.43	md=2.00	dev.=0.90

4. Share about your experiences since coming to Rose State College

4.1) I have participated in events or activities sponsored by groups reflecting my own cultural heritage.	Strongly Disagree		Strongly Agree	n=684	av.=2.84	md=3.00	dev.=1.07
4.2) I have participated in events or activities sponsored by groups reflecting a cultural heritage different from my own.	Strongly Disagree		Strongly Agree	n=683	av.=2.74	md=3.00	dev.=1.08
4.3) I have participated in religious or spiritual activities that are new to me.	Strongly Disagree		Strongly Agree	n=682	av.=2.86	md=3.00	dev.=1.18
4.4) I have attended a lecture/workshop/campus discussion on international issues.	Strongly Disagree		Strongly Agree	n=683	av.=3.42	md=4.00	dev.=1.07
4.5) I have discussed current events with other students.	Strongly Disagree		Strongly Agree	n=681	av.=2.35	md=2.00	dev.=1.02
4.6) I have worked cooperatively with people from backgrounds other than my own.	Strongly Disagree		Strongly Agree	n=684	av.=1.82	md=2.00	dev.=0.80
4.7) I have taken classes that help me understand other cultures.	Strongly Disagree		Strongly Agree	n=683	av.=2.66	md=3.00	dev.=1.16

Subject:

FW: Stats of the Week -- Global and Cultural Awareness Spring 2018 #2

I hope you have had a chance to review the overall results from the Global and Cultural Awareness Survey. The full results are attached and will soon be available on the internal web. Please look at the full results and let me know if there is a particular question that you have a burning desire to dig deeper into the demographics of who answer that question and how they answered.

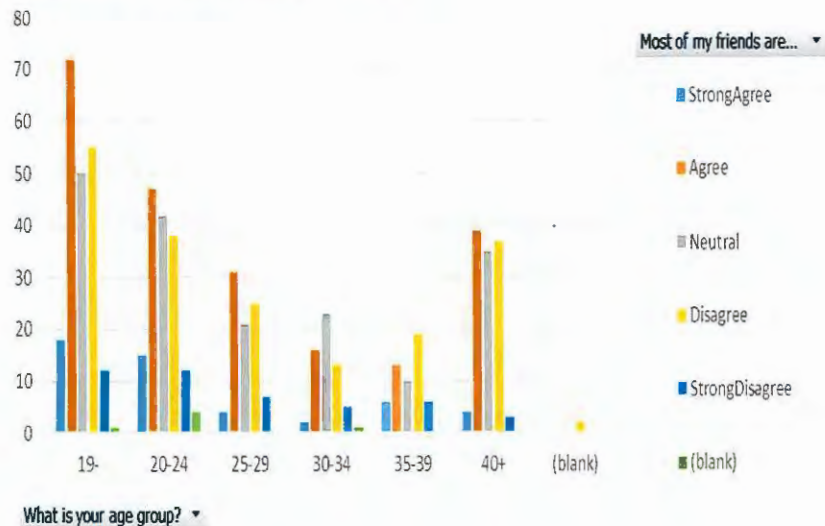
For now, I will start pulling some of the questions that I find interesting and giving you some stats.

The scale for responses is 1-5 (Strongly Agree – Strongly Disagree). I have chosen a few of the questions for which to provide more detail.

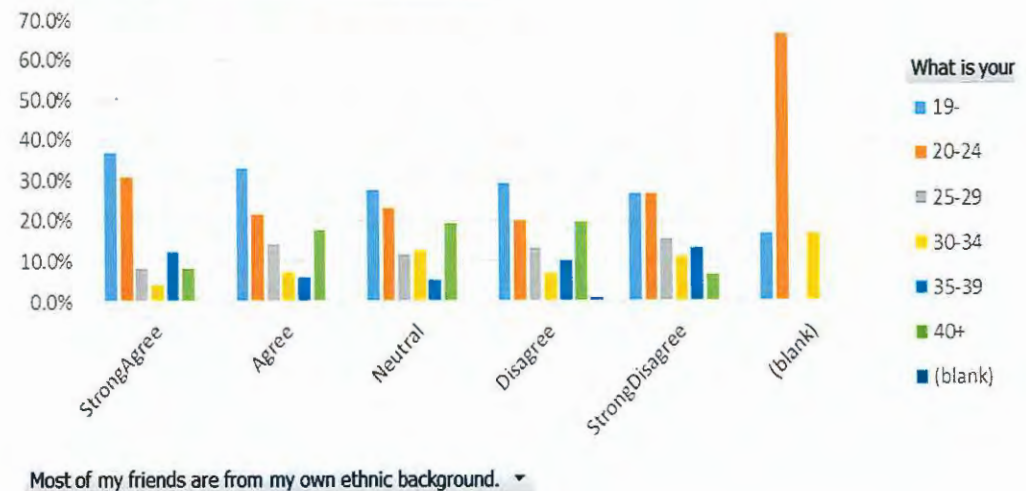
Last year we looked at the question **Most of my friends are from my own ethnic background**. Two different views of the same question from this year's results are shown below. Looking at the Category Strongly Agree or Agree, the largest numbers are from the traditional age students followed by the age group 40 and over.

Number of Responses

Most of my friends are from my own ethnic background

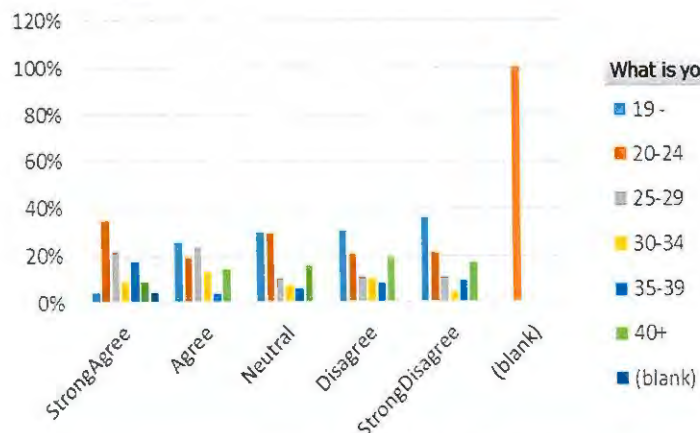


Most of my Friends are from my own ethnic background



Another question **2.11 (There is little I can do to make the world a better place to live in)** yielded encouraging results with 454 out of 688 responding with Disagree or Strongly Disagree. The largest age groups to respond Disagree or Strongly Disagree are the ages 19 and younger and 40 and older. Does age then make a difference? Does being young and uninhibited or older and wiser allow students to feel like they can make a change?

Count of Sheet



There is little I can do to make the world a better place to live in.

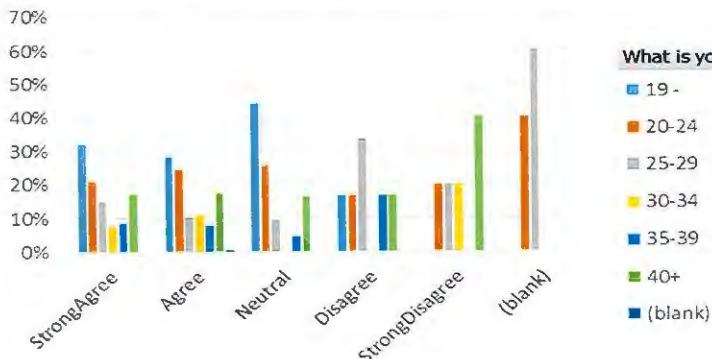
Answers

	19 -	20-24	25-29	30-34	35-39	40+	(blank)	
StrongAgree	1	8	5	2		4	2	1
Agree	20	15	18	10		3	11	
Neutral	40	39	14	10		8	21	1
Disagree	95	64	35	31		25	59	
StrongDisagree	52	31	16	7		14	25	
(blank)		1						
Grand Total	208	158	88	60		54	118	2

There is little I can do to make the world a better place to live in.

Question 2.11 correlates to question **2.12 (I believe I can do things that make a difference in the lives of others)** with 629 out of 688 responding Strongly Agree or Agree and again the younger groups and the older group had more responses in the Strongly Agree and Agree section. I did look at this same question by Race/Ethnicity but there was nothing significant, all of the races responded mostly Strongly Agree or Agree.

I believe I can do things that make a difference in the lives of others

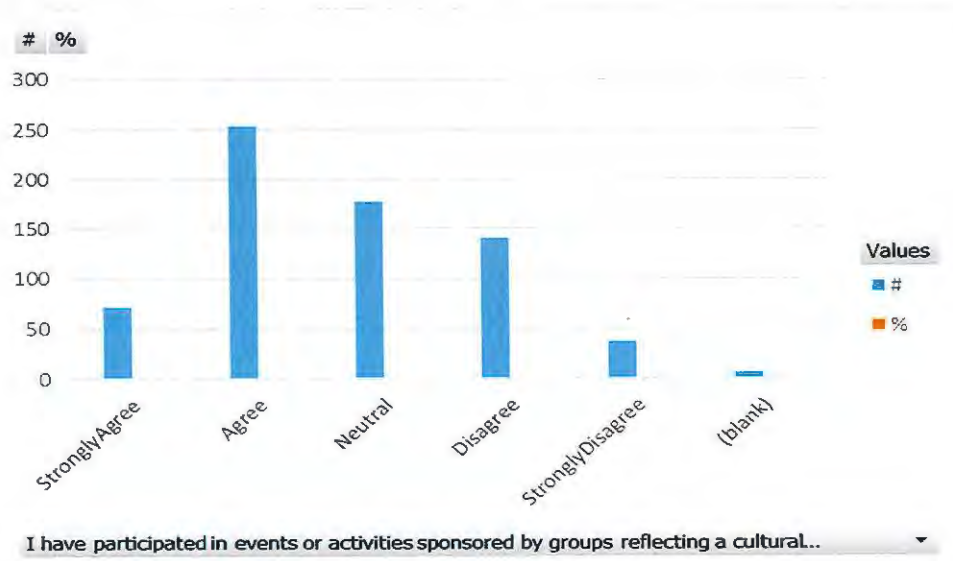


I believe I can do things that make a difference in the lives of others.

I believe I can do things that make a difference in the lives of others

	Age	19 -	20-24	25-29	30-34	35-39	40+	(blank)	Grand Total
StrongAgree		91	59	42	21	24	48		285
Agree		97	84	36	38	27	60	2	344
Neutral		19	11	4		2	7		43
Disagree		1	1	2		1	1		6
StrongDisagree			1	1	1		2		5
(blank)			2	3					5
Grand Total		208	158	88	60	54	118	2	688

Ok, one more for today. **Q 4.2 I have participated in events or activities sponsored by groups reflecting a cultural heritage different from my own.** Nearly half of the respondents said StronglyAgree or Agree



Response	#	%
StronglyAgree	72	10.47%
Agree	253	36.77%
Neutral	177	25.73%
Disagree	141	20.49%
StronglyDisagree	38	5.52%
(blank)	7	1.02%
Grand Total	688	100.00%

Response	Ages						(blank)	Grand Total
	19 -	20-24	25-29	30-34	35-39	40+		
Strongly Agree	20	19	11	4	8	10		72
Agree	78	44	31	23	18	59		253
Neutral	46	44	23	18	15	30	1	177
Disagree	51	37	16	11	10	15	1	141
Strongly Disagree	11	10	7	4	3	3		38
(blank)	2	4				1		7
Grand Total	208	158	88	60	54	118	2	688

I can see why Jeff said ‘my head hurts’ because now mine does, I’m going to the gym.....

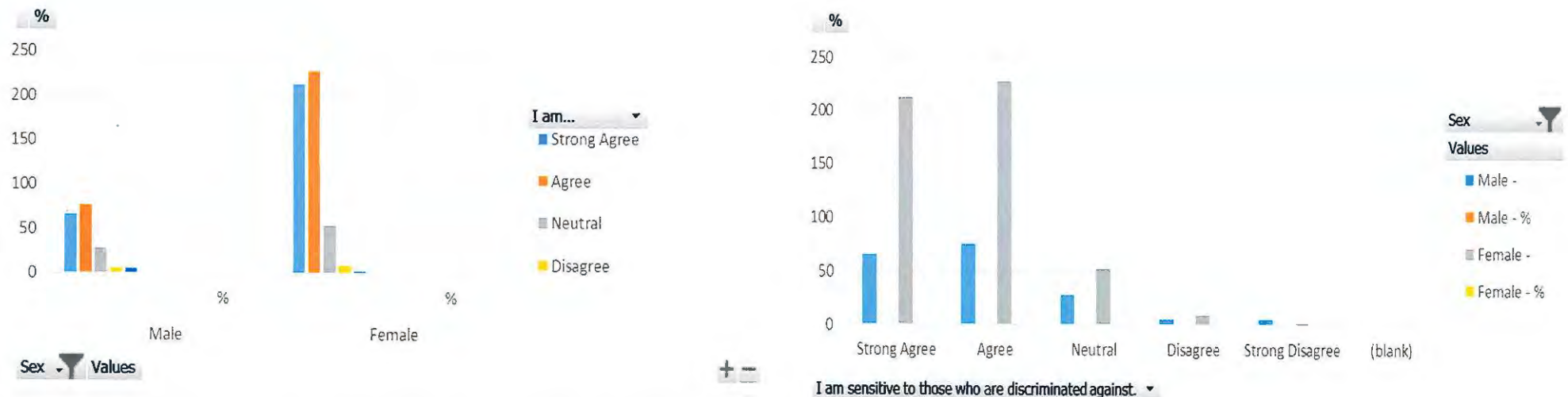
More data to come in future additions of ‘Stats of the Week’. Please feel free to send me comments or questions.

Isabelle Billen | Rose State College | Associate VP for Academic Affairs and Institutional Effectiveness
6420 SE 15th Street | FA 117 | Midwest City, OK 73110 | p: 405.733.7580 | e: ibillen@rose.edu

Subject: FW: Stats of the Week -- Global and Cultural Awareness Spring 2018 #3

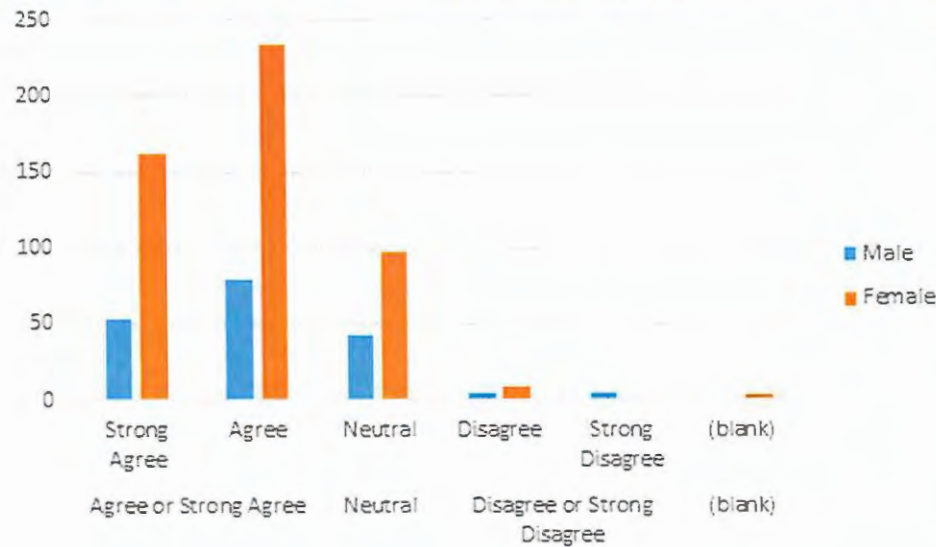
A little more data for you resulting from the Global and Cultural Awareness Survey.

Question 2.3 I am sensitive to those who are discriminated against. When we did this survey in Spring 2015 we found that the females were significantly higher on the Strongly Agree spectrum. As you can see, this year the results were similar. When looking at total responses, 85% of the students selected Strongly Agree or Agree, which is a very positive sign.



I am sensitive to those who are discriminated against						
Response	StrongAgree	Agree	Neutral	Disagree	StrongDisagree	Grand Total
Male	36%	42%	15%	3%	3%	100%
Female	42%	45%	10%	2%	0%	100%
Grand Total	41%	44%	12%	2%	1%	100%

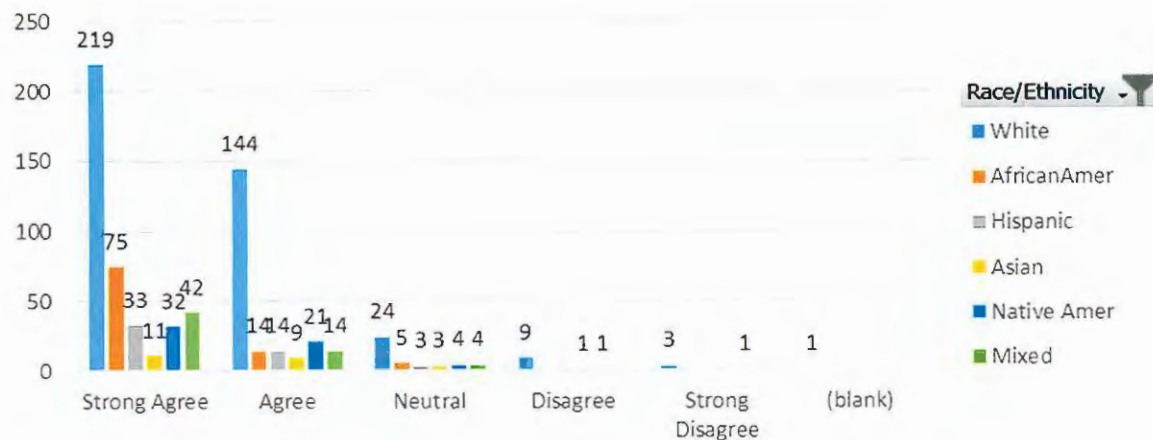
Question 2.18 I feel that my college community honors diversity. The results for this question were very positive, 77% of the students selected Agree or Strongly Agree. This speaks very highly of our faculty and staff as we have a very diverse student population.



I feel that my college community honors diversity				
Response	Sex			
	Male	Female	Grand	
Agree or Strong Agree				
Strong Agree	53	162	215	
Agree	79	234	313	
Neutral				
Neutral	42	98	140	
Disagree or Strong Disagree				
Disagree	4	8	12	
Strong Disagree	4	1	5	
(blank)				
(blank)		3	3	
Grand Total	182	506	688	

Question 2.4 I feel that discrimination still exists Out of the 412 students who Strongly Agree with this statement, 53% were White and 18% were African American. Each of the other groups had less than 10%. You can see from the chart below that 628 of the 687 (1 student left this answer blank)

Strongly Agree or Agree that discrimination still exists. Can we do anything as faculty and staff, to change this perception?



I feel that discrimination still exists. ▾

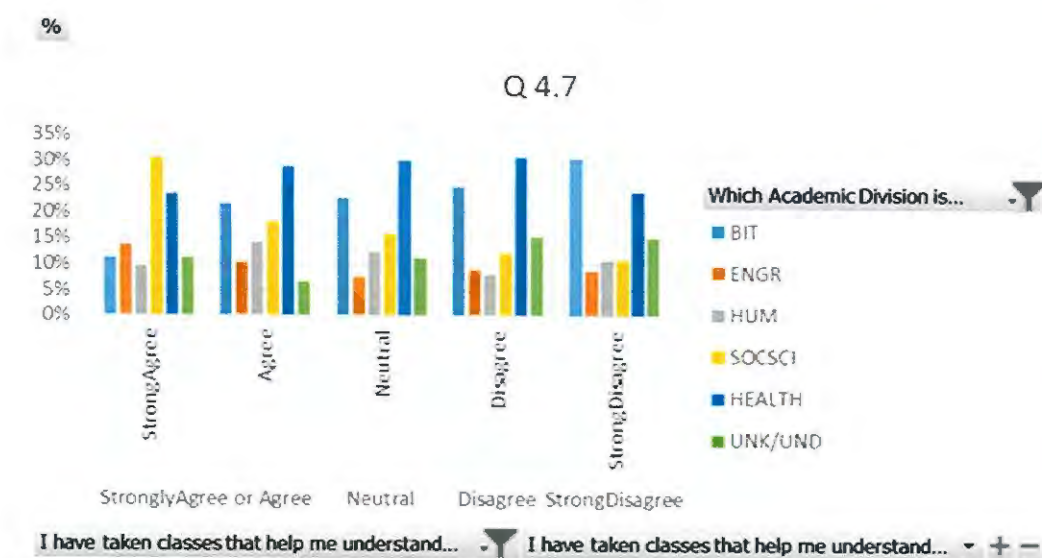
Billen, Isabelle

From: Billen, Isabelle
Sent: Monday, May 07, 2018 9:42 AM
To: Billen, Isabelle
Subject: Stats of the Week -- Global and Cultural Awareness Spring 2018 # 4

More data for you to ponder from the Global and Cultural Awareness Assessment Survey.

Question 4.7 I have taken classes that help me understand other cultures

Of the 340 students who answered Strongly Agree or Agree, the most respondents (92) came from the Health Sciences Division followed by Social Sciences, Business and Info Tech, Humanities, Engineering, Unknown/Undecided. Last year the responses were in this order: Social Sciences, Unknown/Undecided, Humanities, Engineering, Business and Info Tech, Health Sciences. In both years the largest number of **total** respondents came from the Health Sciences Division but Health Sciences went from having the fewest indicating that they have taken classes to help understand other cultures to having the most indicating that they have taken classes to help understand other cultures. **Interesting....did something change?**

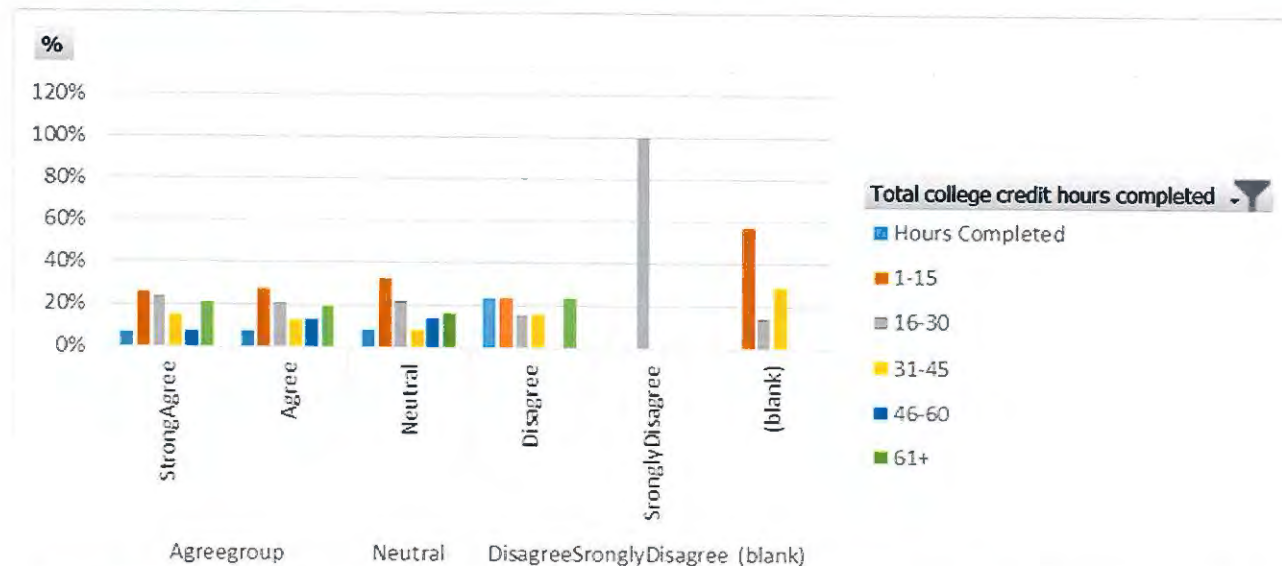


Q 4.7 I have taken classes that help me understand other cultures

Division	BIT	ENGR	HUM	SOCSCI	HEALTH	UNK/UND
Strongly Agree or Agree	18%	11%	13%	22%	27%	8%
Strongly Agree	11%	14%	10%	30%	23%	11%
Agree	22%	10%	14%	18%	29%	7%
Neutral	23%	8%	12%	16%	30%	11%
Neutral	23%	8%	12%	16%	30%	11%
Disagree	25%	9%	8%	12%	31%	15%
Disagree	25%	9%	8%	12%	31%	15%
Strongly Disagree	30%	9%	11%	11%	24%	15%
Strongly Disagree	30%	9%	11%	11%	24%	15%
Grand Total	21%	10%	12%	18%	28%	11%

Question 3.6 I take into account different perspectives before drawing conclusions about the world around me

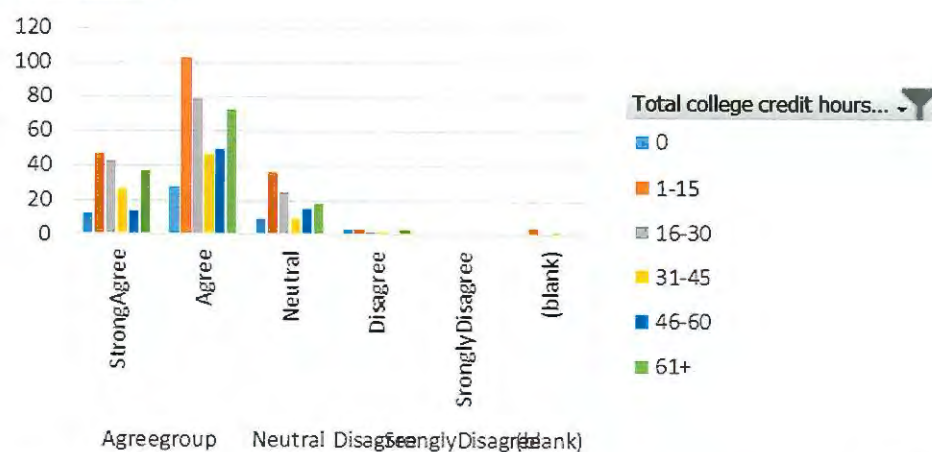
Interesting results for this question, I would have guessed that the students with more hours (hence older maybe more mature, more experiences) would have shown to have higher responses in the Strongly Agree/Agree category but this was not the case. The group with the highest Strongly Agree/Agree responses were from the students with 1 to 15 hours completed (149 out of 555) (but.....this group also had the most total respondents). It is good to see that 555 out of the total 688 (81%) respondents selected Strongly Agree or Agree. Could this also indicate some critical thinking skills?



I take into account different perspectives before... I take into account different perspectives before... + -

Response	Hours	0	1-15	16-30	31-45	46-60	61+	Grand Total
Agreegroup		40	149	122	72	63	109	555
Strongly Agree		12	46	43	26	14	37	178
Agree		28	103	79	46	49	72	377
Neutral		9	36	25	9	15	18	112
Neutral		9	36	25	9	15	18	112
Disagree		3	3	2	2		3	13
Disagree		3	3	2	2		3	13
Strongly Disagree				1				1
Strongly Disagree				1				1
(blank)			4	1	2			7
(blank)			4	1	2			7
Grand Total		52	192	151	85	78	130	688

Count of Sheet



I take into account different... I take into account different... + -

Is there a question from the survey for which you would like to see some disaggregated info? Let me know.

Thanks for listening...

Isabelle Billen | Rose State College | Associate VP for Academic Affairs and Institutional Effectiveness
6420 SE 15th Street | FA 117 | Midwest City, OK 73110 | p: 405.733.7580 | e: ibillen@rose.edu

